



ezAFM⁺

Better Functionality, The Same Affordability

The ezAFM⁺ is for student laboratories, high schools, nanotechnology education and basic research with its compact, highly stable, user-friendly design.



*Every system will include one of the standard imaging modes. Further modes can be added optionally.



Technical Specifications

- Alignment free cantilevers, commercially available
- 120x120x40µm or 40x40x4µm scan range
- Contact, Dynamic/Phase Imaging, Lateral Force & MFM modes
- 65fm/√Hz noise floor
- 2µm resolution integrated optical microscope
- 8MP, 390x230µm FOV, 3264x2448 pixels, 30fps, video camera
- 24 Bit ADCs/DACs
- Digital Feedback with FPGA/DSP
- Sample Size, 10x10x5mm (Configurable or unlimited sample size)
- USB interface
- Unlimited user license
- Free software upgrades for lifetime
- Side view camera

Extended Imaging Options

- Scanning Tunneling Microscopy (ezSTM)
- Liquid Cell
- Electrochemical Cell
- Heating / Cooling Stage (from -30°C to 250°C)

Accessories

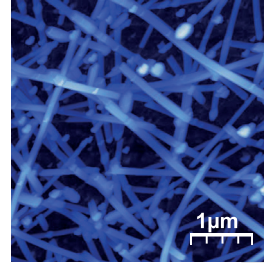
- Signal Access Module
- 38mm stroke XY motorized sample positioner
- 2mm stroke XY manual sample positioner



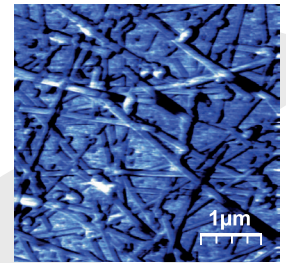
XY Motorised Stage

*Optional accessories are available for all ezAFM models.

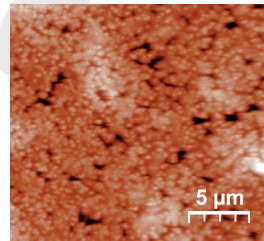
** XY motorized sample positioner with 1 µm



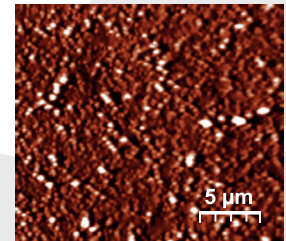
Silver Nanorods



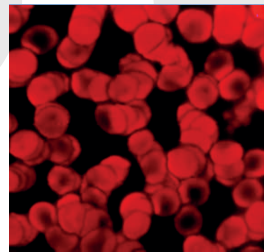
Work function in KPFM mode



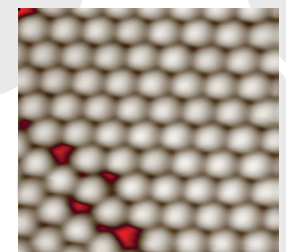
Vertical Carbon Nanotubes in Polymer Matrix



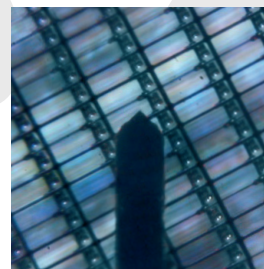
Current image in SSRM Mode



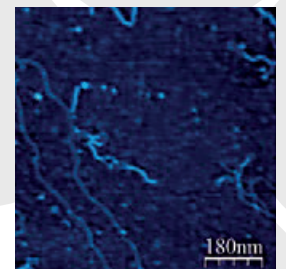
Blood Cell 40 x 40 µm



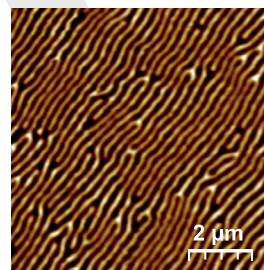
Polystyrene 5 x 5 µm



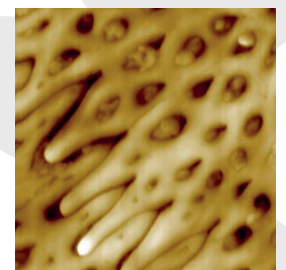
Video Microscope Image of Cantilever



Plasmid DNA



MFM image of FePtSi Film



Snake Skin 3.5 x 3.5 µm